

# OPTICAL DISTRIBUTION RACK

## 2LINE ODR

The ODR is an enhancement of the existing 2Line ODF-System for FTTx-fiber optic network. It has a high fiber capacity and an easy operating fiber management system.

- Cost and space saving distribution frame system with a capacity up to 2592 fibers or rather 42 HE.
- Fits perfectly to all variations of standard cable systems, micro cable systems and blow fiber systems.
- Short and easy assembly at site or customized pre-installation at our factory.
- Dissect deliverable in two packages of 30 kg.
- The patch cable management system uses only uniform patch cable lengths.
- The cable fixing plate allows cable entry from top or bottom.
- Miniflex tubes for guiding loose tubes towards splice-patch-modules.
- Completely mirrored construction possible by symmetrical components.
- Fiber bundles as a guided variant in combs or with free channel individually selectable.
- Patch cable management in different variants.
- Installation of the modules standard, 19" back mounting or optional 19" front mount.
- Installation of deep 19" modules through back to back mounting with additional frame possible.
- Guided patch cable through cable duct at the bottom or through the roof frame.



## Features & Technical Data

### 2LINE ODR

#### Configurations

- 19" standard frame with optimized patch cable management
- 2Line compact frame for SPM-Modules

#### Features

- Flexible system with high fiber density
- Customized configuration
- Bend radius control for all cables, fibers and patchcords
- Central fiber optic cable management
- Mounting at the wall, at the sealing, back to back, or side by side
- Removable module system for easy splicing
- Single standard length for patch cable management of 2.60 m

#### Technical Data

##### Material

Steel powder coated RAL 7035, stainless steel

##### Dimensions

2200 mm x 900 mm x 300 mm (H x W x D)

1800 mm x 900 mm x 300 mm (H x W x D)

##### Options

Doors, side panels, splitters, attenuators, Fanout bracket, cover for top and bottom, cable duct for top and bottom, guiding element, cover for cable entrance plate, 19"-frame for front mounting, plastic guiding drum or aluminum drum, mounting of the modules by cage nut or thread rail

##### Capacity max.

ODR 2200 mm Height, 3024 LC ports\*

ODR 1800 mm Height, 2376 LC ports\*

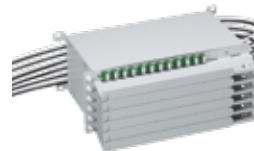
#### Splice/Patch Modules

SPM ST/HD 3HE SC, LC or E2000

SPM ST/HD 2HE SC, LC or E2000

SPM ST/HD 1HE SC, LC or E2000

Note: Please find detailed information about our modules in the data sheet Moduls



SPM ST 3HE



SPM ST 2HE



SPM ST 1HE

\*theoretical density

# Configurations

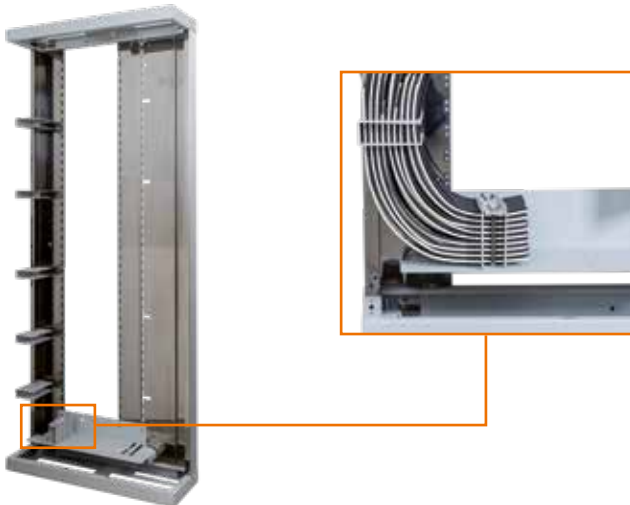
## 2LINE ODR

Through various configurations, the ODR base frame can be configured in different variants.  
(Shown at the variant 2Line compact cabinet for SPM modules)

### Guiding of the fiber bundles

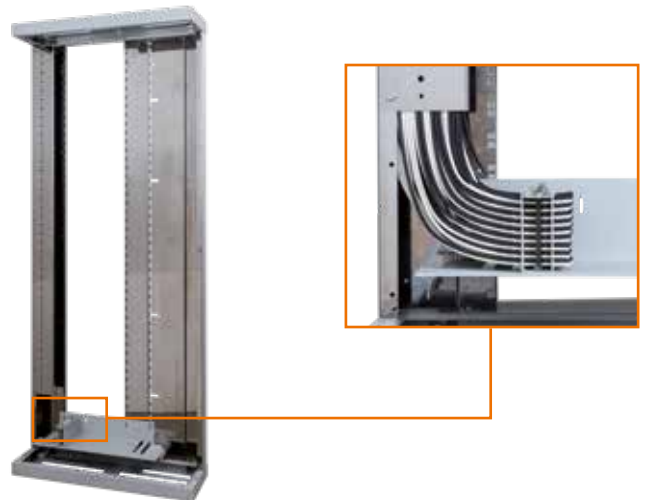
#### MFK

Structured guidance of the micro tubes by combs



#### MFF

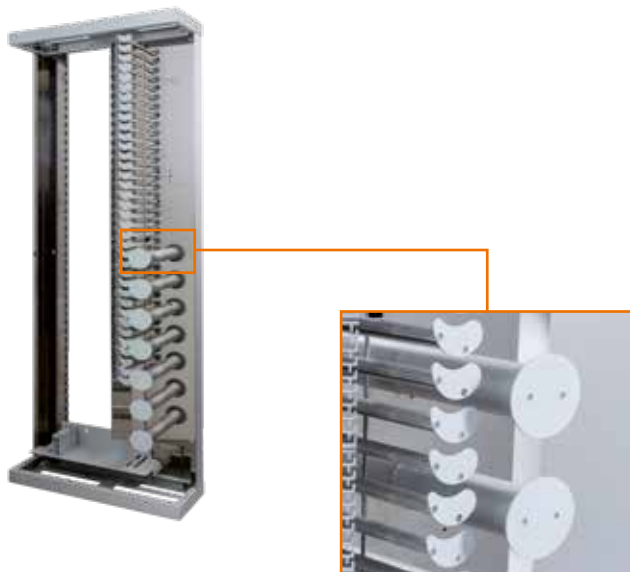
Free channel for the micro tubes



### Patch cable management

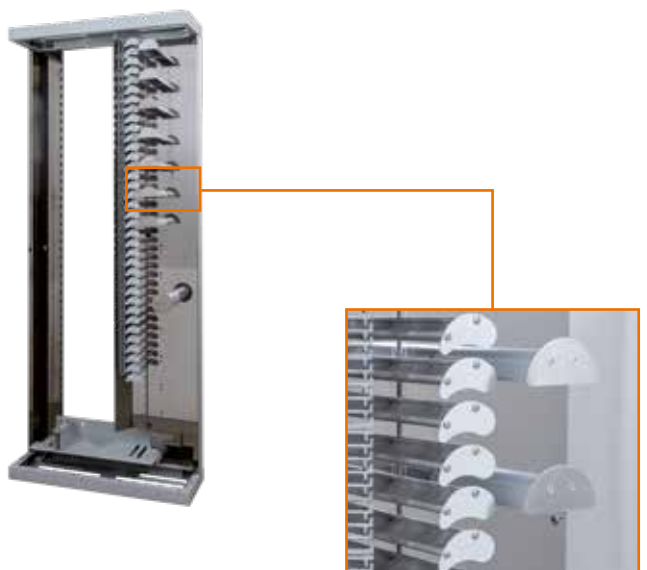
#### Standard

Patch cable from the module downwards with length compensation upwards



#### Patch+

Patch cable from the module upwards with length compensation up and down.



Standard KT: plastic drums  
Standard AL: aluminum drums

Patch+ KT: plastic drums  
Patch+ AL: aluminum drums

## Accessories

### 2LINE ODR

**ODR 19" depth adapter**



Variants: 200 mm, 300 mm, 400 mm

**ODR doors**



**ODR side panel**



**19" frame (depth adjustable)**

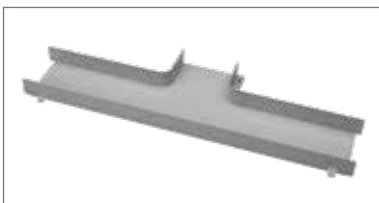


ODR 19" Variants:  
1/ 2/ 5/ 10/ 20/ 42 HE

**Cover for cable entrance plate**



**Cable duct for bottom**



**Guiding drum**



**Cover for top and bottom**

